

Trust Board and Senior Leadership Team

Mersey and West Lancashire Teaching Hospitals NHS Trust is run by a Board that consists of Executive and Non-Executive Directors. The Trust delivers healthcare services at Whiston, Southport, St Helens, Ormskirk and Newton hospitals, and some community and primary care services. The Board sets the strategic direction for the Trust, maintains high standards, quality and performance and ensures that robust systems of corporate governance are in place. The Board's most important priority is to ensure that the services delivered to patients are safe and effective.



Steve Rumbelow
Chairman

The Chairman of the Trust Board is a non-executive appointment, and is responsible for leading the Board, and ensuring that the Trust fulfils its legal and financial obligations.



Rob Cooper
Chief Executive


The Chief Executive is the Trust's accountable officer with overall responsibility for the performance of the organisation. The Chief Executive is supported by the Executive Directors and other senior managers to deliver the Trust's corporate objectives.




Anne-Marie Stretch
Deputy Chief Executive



Gareth Lawrence
Chief Finance Officer



Prof Sarah O'Brien
Chief Nursing Officer



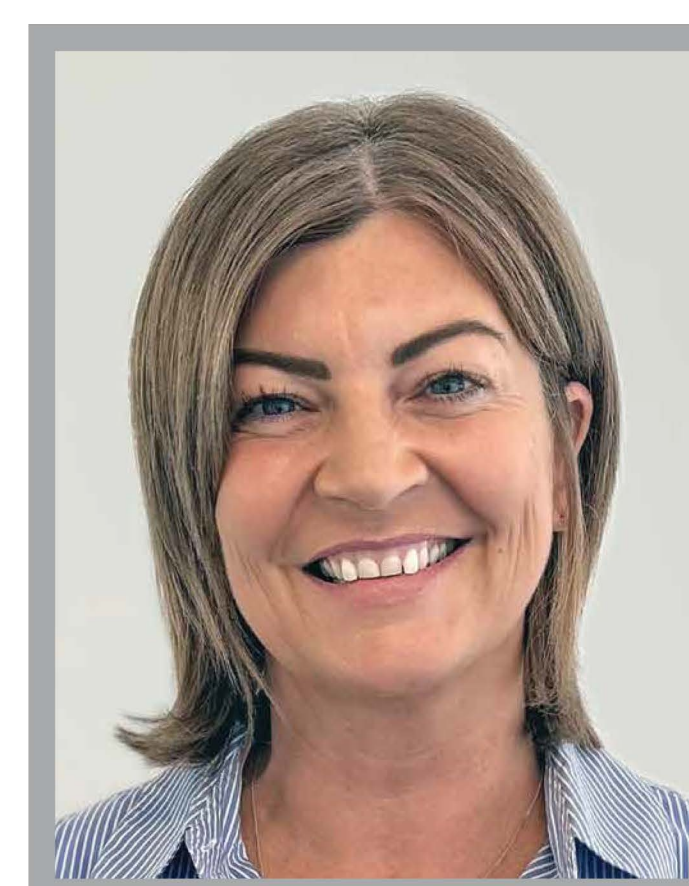
Dr Simon Dowson
Chief Medical Officer



Vacancy
Director of Corporate Services



Dr Kate Clark
Director of Strategy



Lesley Neary
Chief Operating Officer



Malise Szpakowska
Chief People Officer



Malcolm Gandy
Director of Informatics



Wayne Longshaw
Director of Integration

Non-Executive Directors



Gill Brown
Non-Executive Director and Deputy Chair



Steve Connor
Non-Executive Director



Prof Minal Singh
Non-Executive Director



Lisa Knight
Non-Executive Director



Dr Neil French
Non-Executive Director (University nominated)



Carole Spencer
Non-Executive Director



Neil Fletcher
Associate Non-Executive Director



Dr Khalid Anis MBE
Associate Non-Executive Director