

# Trust Board and Senior Leadership Team

**Richard Fraser**  
Chairman

The Chairman of the Trust Board is a non-executive appointment, and is responsible for leading the Board, and ensuring that the Trust fulfils its legal and financial obligations.

Mersey and West Lancashire Teaching Hospitals NHS Trust is run by a Board that consists of Executive and Non-Executive Directors. The Trust delivers healthcare services at Whiston, Southport, St Helens, Ormskirk and Newton hospitals, and some community and primary care services. The Board sets the strategic direction for the Trust, maintains high standards, quality and performance and ensures that robust systems of corporate governance are in place. The Board’s most important priority is to ensure that the services delivered to patients are safe and effective.

**Rob Cooper**  
Chief Executive

The Chief Executive is the Trust’s accountable officer with overall responsibility for the performance of the organisation. The Chief Executive is supported by the Executive Directors and other senior managers to deliver the Trust’s corporate objectives.

**Anne-Marie Stretch**  
Deputy Chief Executive

**Gareth Lawrence**  
Director of Finance and Information

**Sue Redfern**  
Director of Nursing, Midwifery and Governance

**Malise Szpakowska**  
Director of Human Resources

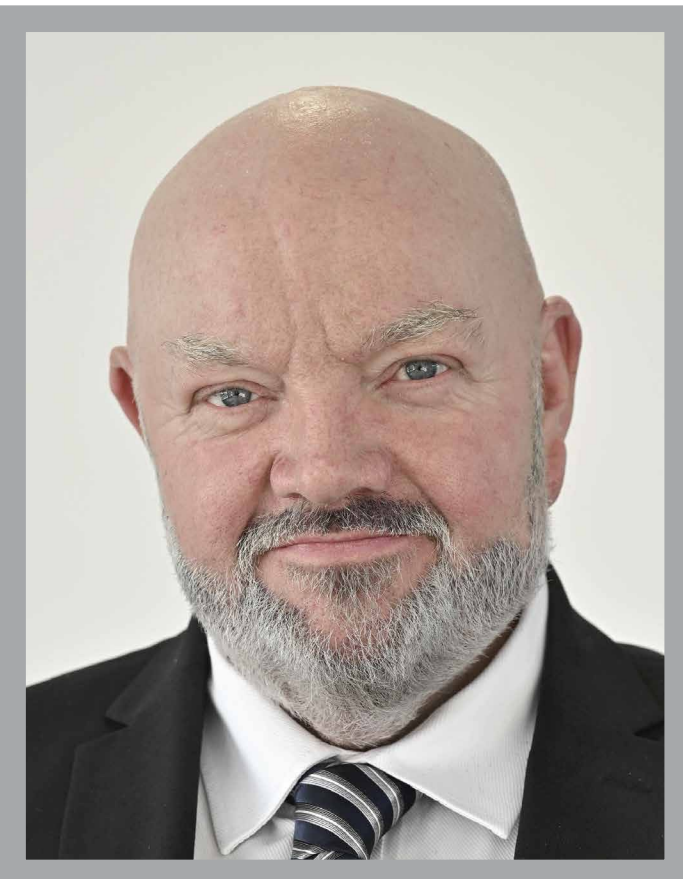
**Dr Peter Williams**  
Medical Director



**Nicola Bunce**  
Director of Corporate Services



**Dr Kate Clark**  
Director of Strategy



**Malcolm Gandy**  
Director of Informatics

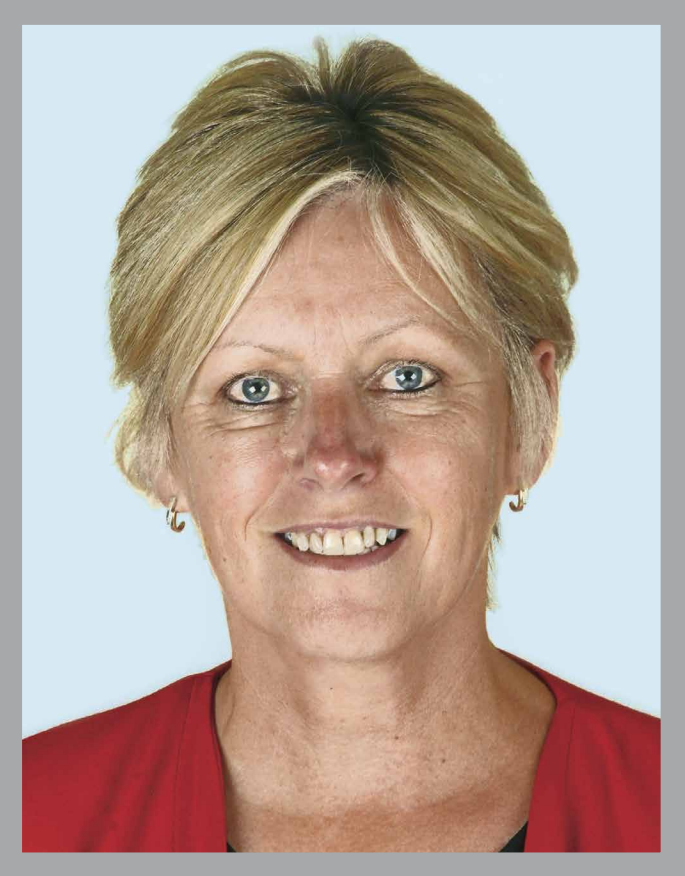


**Wayne Longshaw**  
Director of Integration

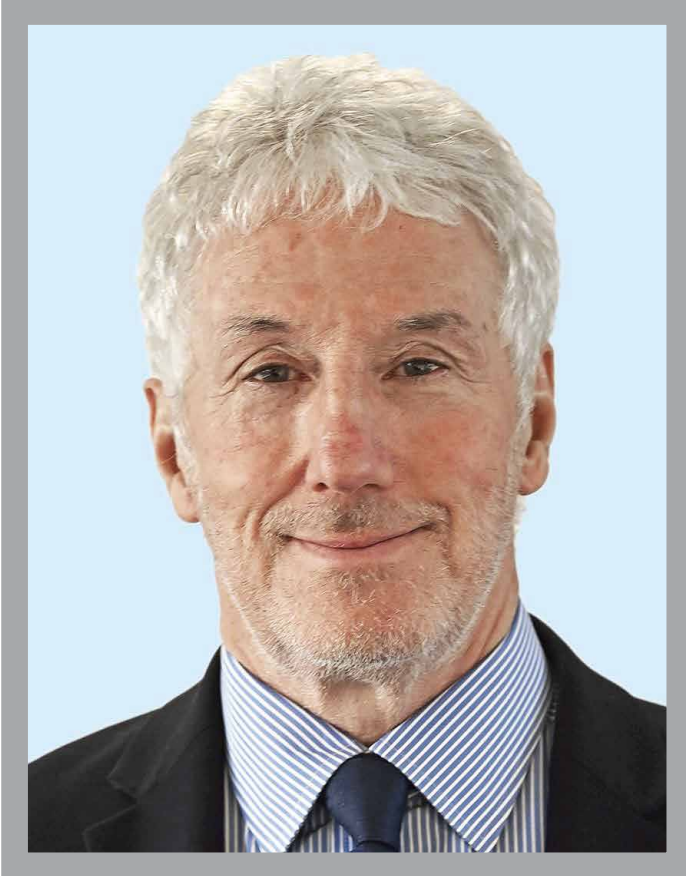


**Lesley Neary**  
Chief Operating Officer

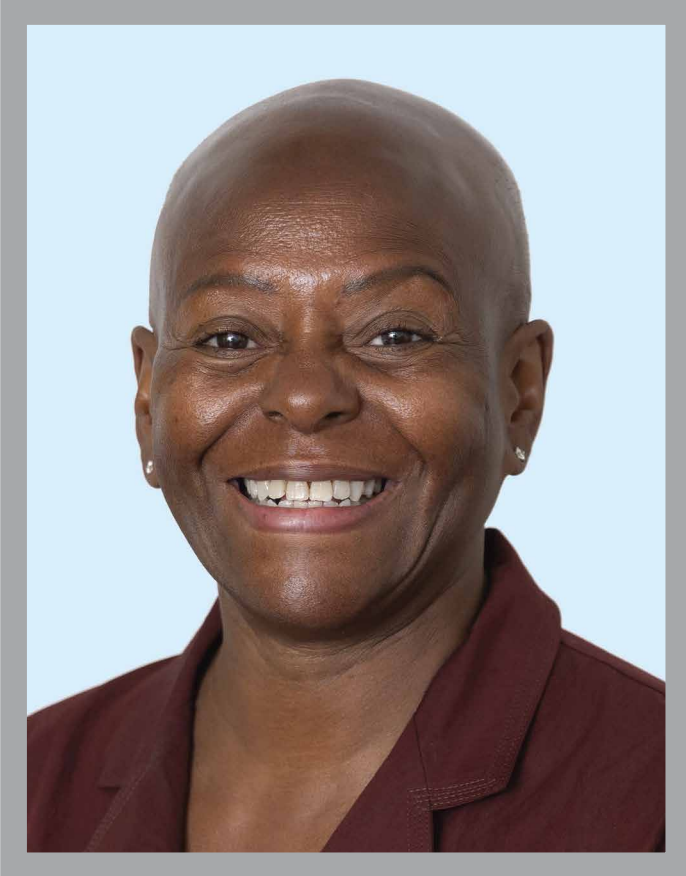
## Non-Executive Directors



**Gill Brown**  
Non-Executive Director and Deputy Chair



**Steve Connor**  
Non-Executive Director



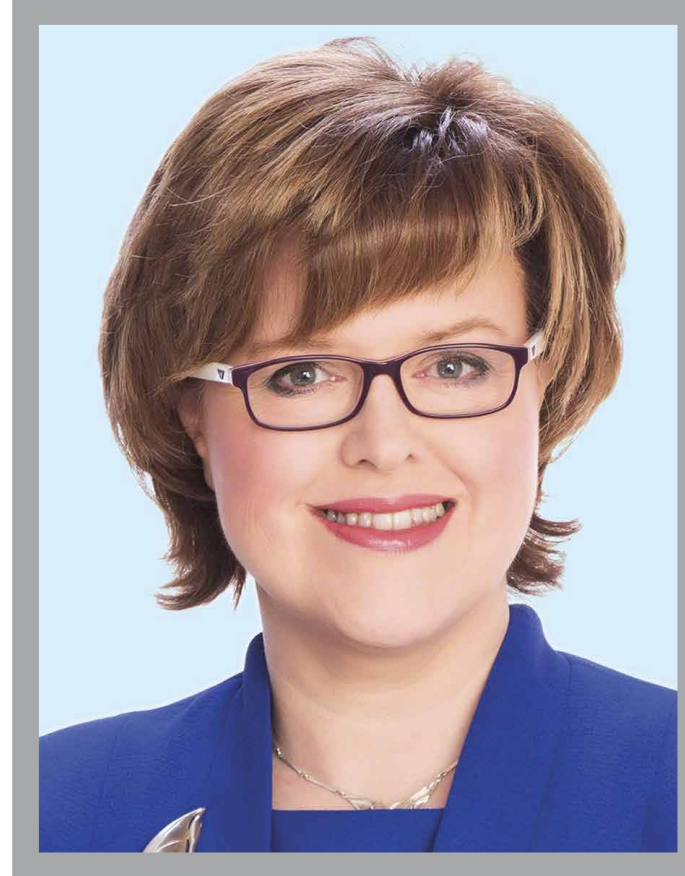
**Claudette Elliott**  
Non-Executive Director



**Neil Fletcher**  
Associate Non-Executive Director



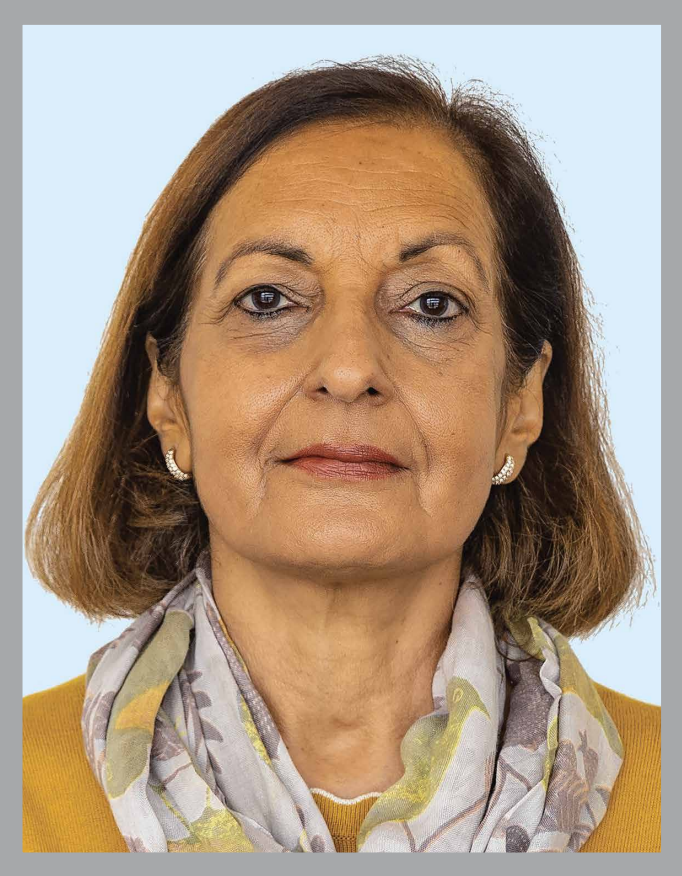
**Lisa Knight**  
Non-Executive Director



**Hazel Scott**  
Non-Executive Director (university nominated)



**Carole Spencer**  
Non-Executive Director



**Rani Thind**  
Associate Non-Executive Director